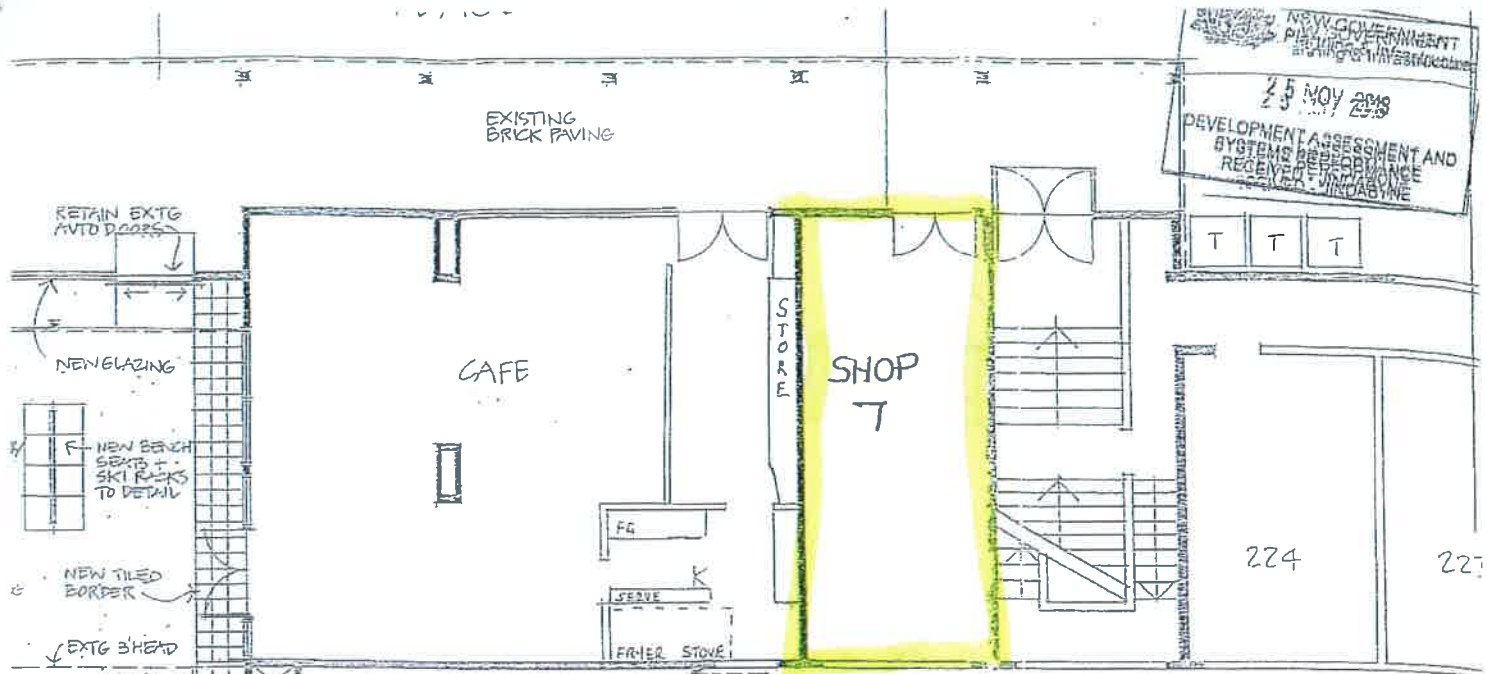


NSW GOVERNMENT  
 Planning & Infrastructure  
 25 NOV 2013  
 DEVELOPMENT ASSESSMENT AND  
 SYSTEMS PERFORMANCE  
 RECEIVED - JINDABYNE



PLAN - FLOOR PLAN - PREVIOUS  
 DRAWN - SCOTT MCCLYMONIT  
 DATE - 25-11-13

NSW GOVERNMENT  
 Planning

Issued under the Environmental Planning and Assessment Act 1979

Approved Development Application No. 6304

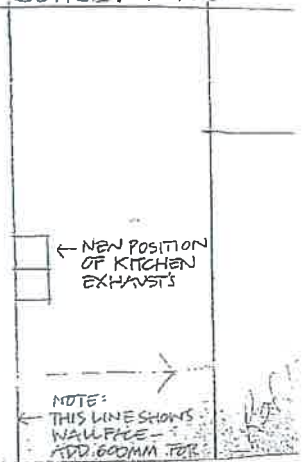
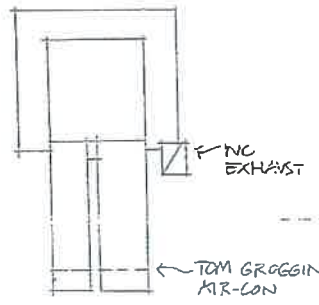
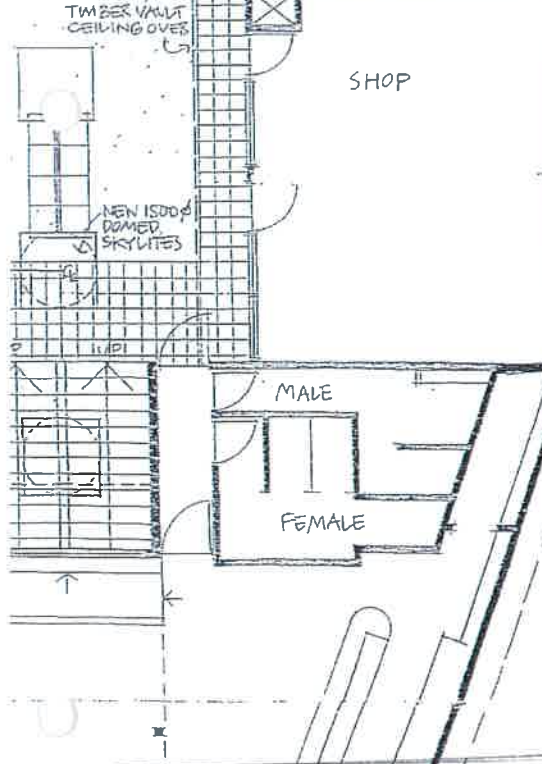
granted on the 12/12/13 subject to any conditions contained in the notice of determination.

Signed Michelle Ko Date 12/12/13

Sheet No. 10 of 11 DA

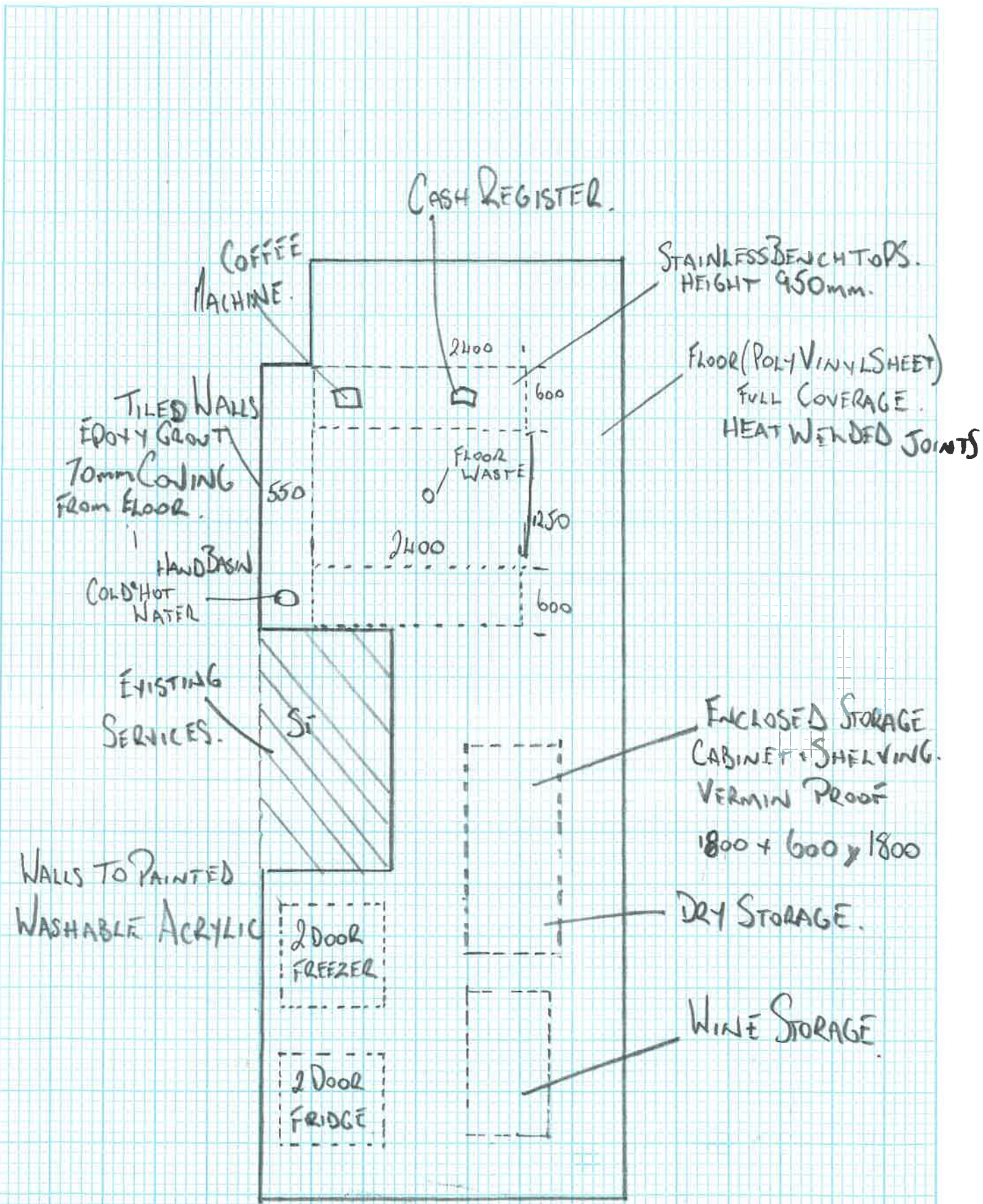


SCALE: 1:100



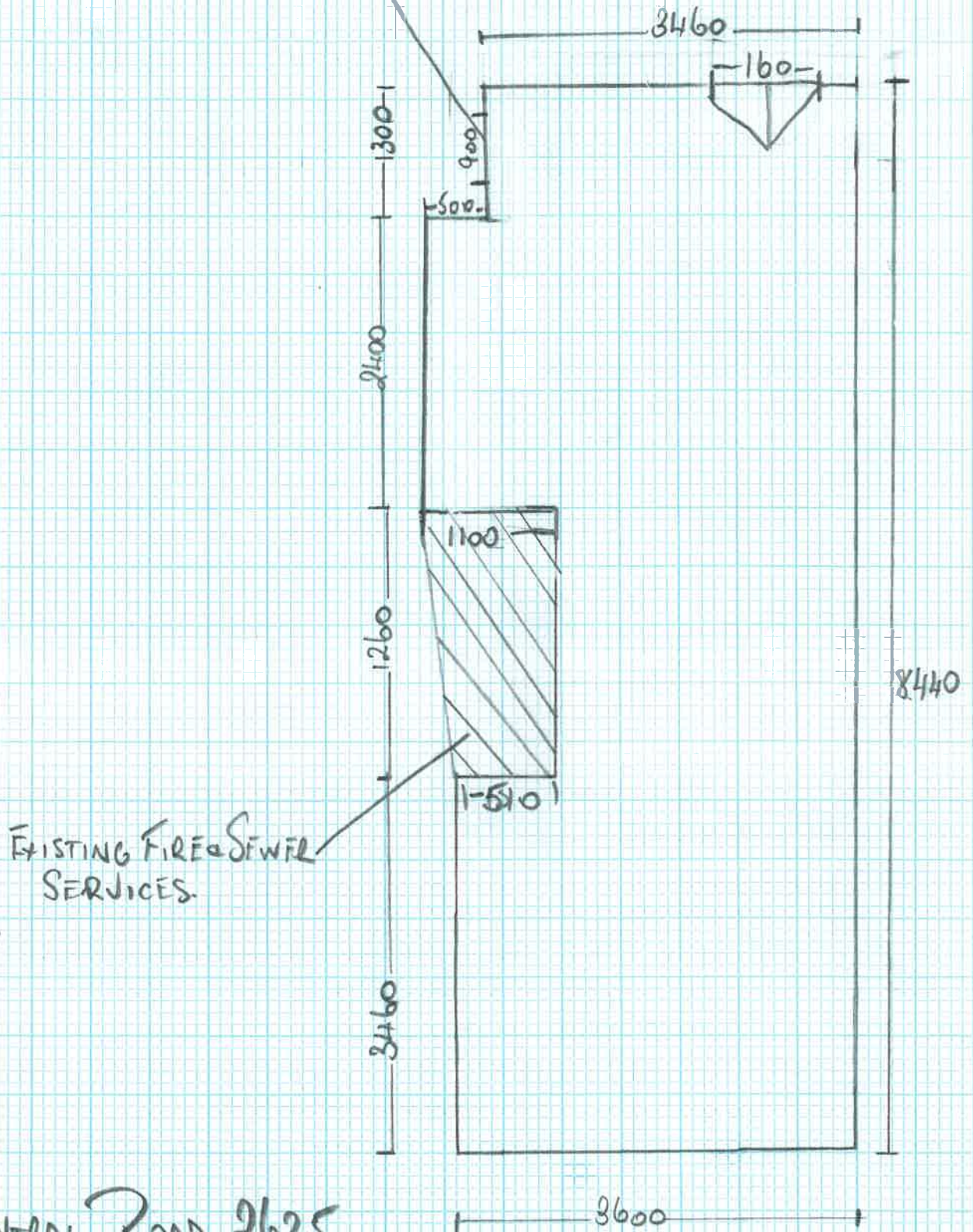
NSW GOVERNMENT  
 Planning & Infrastructure  
 24 MAR 2015  
 DEVELOPMENT ASSESSMENT AND  
 SYSTEMS PERFORMANCE  
 RECEIVED - JINDABYNE

214  
 DEPT OF LANDS



CENTRAL ROAD 2625  
 PREMISES LOT 861, SHOP 7 TAREDO ALPINE HOTEL  
 TAREDO VILLAGE

PROPOSED DOORWAY.



CENTRAL ROAD 2625.

PREMISES LOT 861, SHOP 7 THREDBO ALPINE HOTEL  
THREDBO VILLAGE.